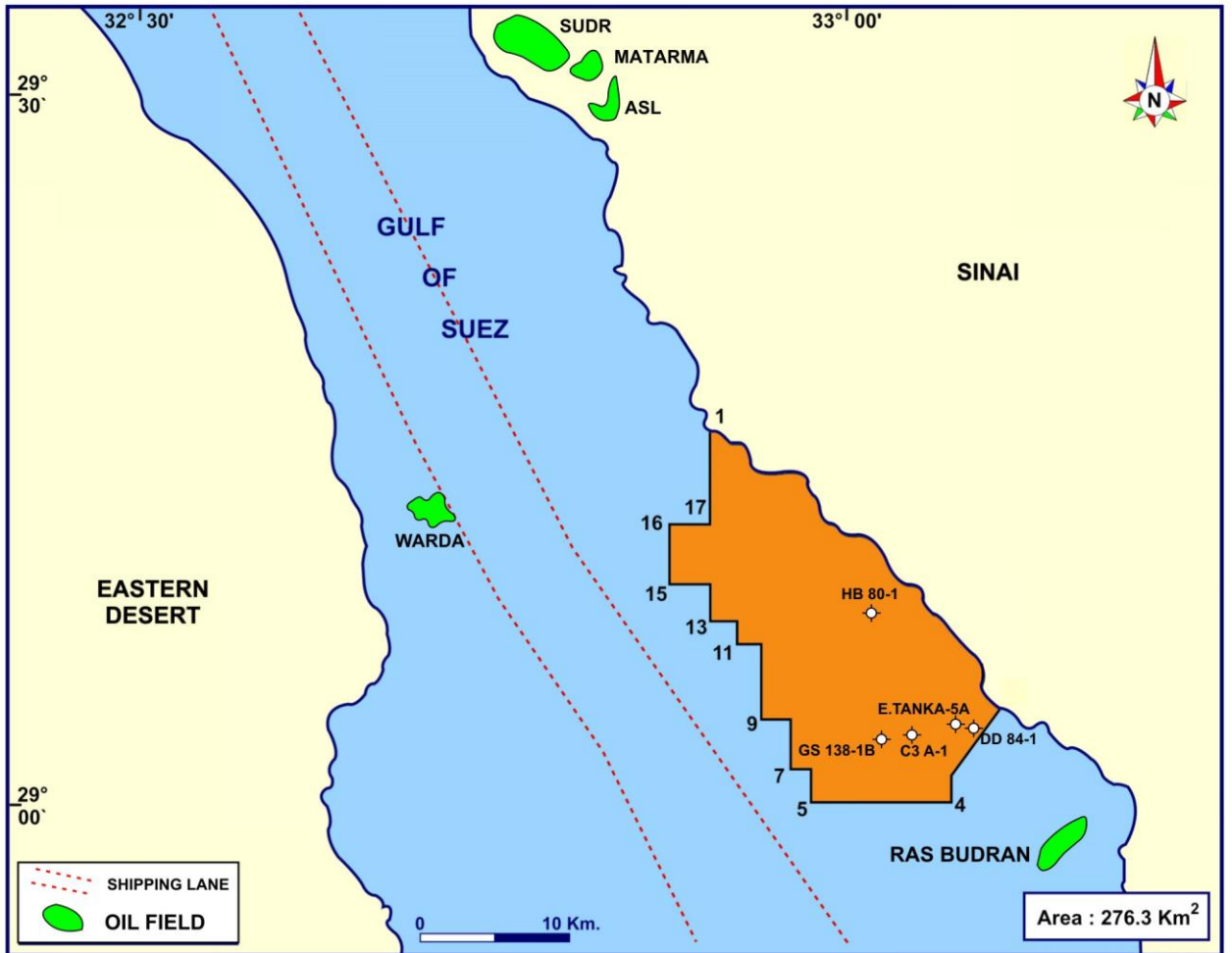


3

NORTHWEST ABU ZENIMA BLOCK



LAT.	LONG.	Coordinates	
1- Eastern coast of Gulf of Suez Shore Line	32° 54' 00.00"	10- 29° 05' 00.00"	32° 56' 00.00"
South along the eastern coast of Gulf of Suez to the point (2)		11- 29° 05' 00.00"	32° 55' 00.00"
2- 29° 03' 36.00"	Eastern coast of Gulf of Suez Shore Line	12- 29° 06' 00.00"	32° 55' 00.00"
3- 29° 00' 42.00"	33° 02' 50.00"	13- 29° 06' 00.00"	32° 54' 00.00"
4- 28° 59' 33.88"	33° 02' 50.00"	14- 29° 08' 00.00"	32° 54' 00.00"
5- 28° 59' 35.65"	32° 58' 00.00"	15- 29° 08' 00.00"	32° 52' 00.00"
6- 29° 01' 00.00"	32° 58' 00.00"	16- 29° 11' 00.00"	32° 52' 00.00"
7- 29° 01' 00.00"	32° 57' 00.00"	17- 29° 11' 00.00"	32° 54' 00.00"
8- 29° 03' 00.00"	32° 57' 00.00"		
9- 29° 03' 00.00"	32° 56' 00.00"		

NORTHWEST ABU ZENIMA BLOCK (3)

DRILLED WELLS

NO.	WELL NAME / NEW NAME	COMPANY	SPUD. DATE COMP.DATE	LAT. LONG.	T.D. FEET	FORMATION REACHED	FINAL STATUS
1	E.TANKA -5A (Ha 81-8)	AMOCO	06/11/97 20/01/98	29° 02' 48.4" 33° 03' 27.6"	13,270	EOCENE	P & A
2	HB 80-1 (Hb 80-1)	AGIP	27/02//91 02/06/91	29° 07' 06.6" 32° 56' 46.9"	11,034	BASEMENT	P & A
3	C3A-1 (Ha 81-7)	CONOCO	10/03/85 24/05/85	29° 02' 27.8" 33° 01' 19.3"	13,931	EOCENE	P & A
4	DD 84-1 (Ha 81-6)	DEMINEX	30/06/82 08/09/82	29° 02' 37.9" 33° 04' 16.6"	10,685	BASEMENT	P & A
5	GS 138-1 B (Ha 81-5)	AMOCO	17/07/79 25/03/80	29° 02' 29.3" 33° 00' 22.3"	16,800	LOWER CRETACEOUS	P & A

Previous Concessionnaire : *bp*

Source Rocks : - *Multi source rock units, mainly associated with Thebes and Brown Limestone Fms.
(different kitchens with different maturity levels).*

Reservoir : - *Kareem, Rudeis and Nukhul sands of Miocene.
- Pre-Miocene porosities.*

Nearby Discoveries : *Ras Budran & Warda oil fields*