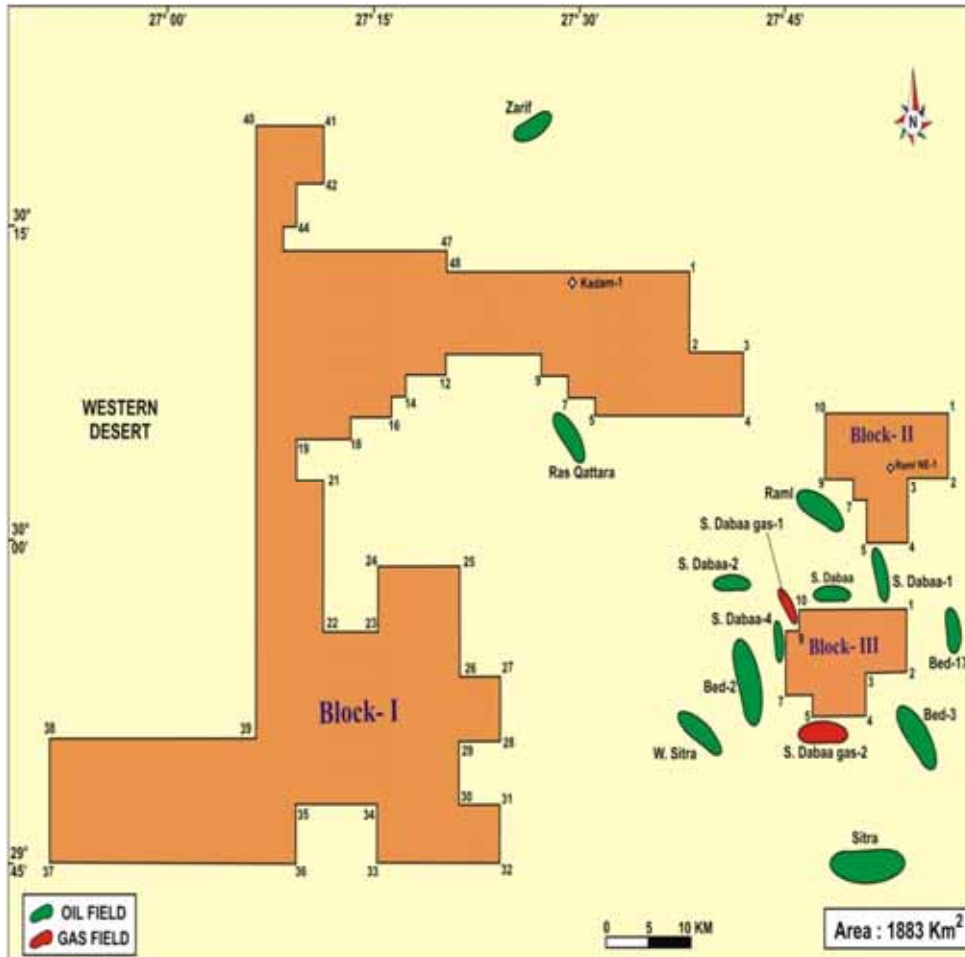




S. GHAZALAT BLOCK



LOCATION :

The block is located in the northern geological domain of the Western Desert in the western portion of Abu El Gharadig basin which is one of the most important basin in the WD.

TOTAL AREA : 1883 Km² .

NEARBY FIELDS :

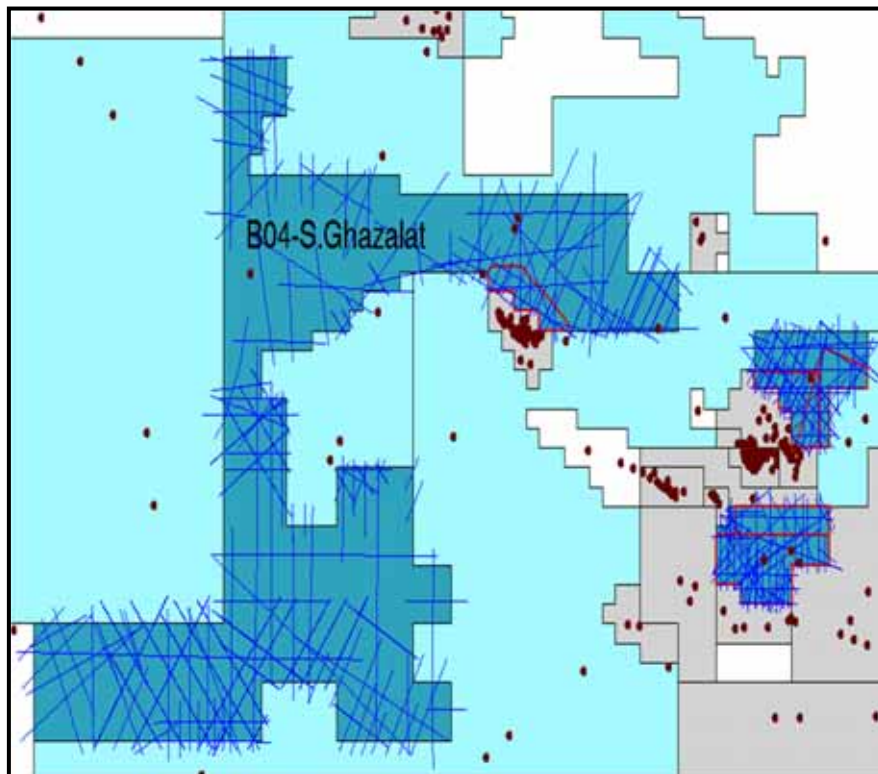
S. Dabaa oil & gas fields, Raml, W. Sitra, BED oil fields, Sitra and S. Dabaa oil & Gas fields.

Coordinates

Block- I		Block- II		Block- III	
LAT.	LONG.	LAT.	LONG.	LAT.	LONG.
1-30° 13' 00.00"	27° 38' 00.00"	25-29° 59' 00.00"	27° 21' 00.00"	1-30° 06' 00.00"	27° 57' 00.00"
2-30° 09' 00.00"	27° 38' 00.00"	26-29° 54' 00.00"	27° 21' 00.00"	2-30° 03' 00.00"	27° 57' 00.00"
3-30° 09' 00.00"	27° 42' 00.00"	27-29° 54' 00.00"	27° 24' 00.00"	3-30° 03' 00.00"	27° 54' 00.00"
4-30° 06' 00.00"	27° 42' 00.00"	28-29° 51' 00.00"	27° 24' 00.00"	4-30° 00' 00.00"	27° 54' 00.00"
5-30° 06' 00.00"	27° 31' 00.00"	29-29° 51' 00.00"	27° 21' 00.00"	5-30° 00' 00.00"	27° 51' 00.00"
6-30° 07' 00.00"	27° 31' 00.00"	30-29° 48' 00.00"	27° 21' 00.00"	6-30° 02' 00.00"	27° 51' 00.00"
7-30° 07' 00.00"	27° 29' 00.00"	31-29° 48' 00.00"	27° 24' 00.00"	7-30° 02' 00.00"	27° 50' 00.00"
8-30° 08' 00.00"	27° 29' 00.00"	32-29° 45' 00.00"	27° 24' 00.00"	8-30° 03' 00.00"	27° 50' 00.00"
9-30° 08' 00.00"	27° 27' 00.00"	33-29° 45' 00.00"	27° 15' 00.00"	9-30° 03' 00.00"	27° 48' 00.00"
10-30° 09' 00.00"	27° 27' 00.00"	34-29° 48' 00.00"	27° 15' 00.00"	10-30° 06' 00.00"	27° 48' 00.00"
11-30° 09' 00.00"	27° 20' 00.00"	35-29° 48' 00.00"	27° 09' 00.00"		
12-30° 08' 00.00"	27° 20' 00.00"	36-29° 45' 00.00"	27° 09' 00.00"		
13-30° 08' 00.00"	27° 17' 00.00"	37-29° 45' 00.00"	26° 51' 00.00"		
14-30° 07' 00.00"	27° 17' 00.00"	38-29° 51' 00.00"	26° 51' 00.00"	1-29° 57' 00.00"	27° 54' 00.00"
15-30° 07' 00.00"	27° 16' 00.00"	39-29° 51' 00.00"	27° 06' 00.00"	2-29° 54' 00.00"	27° 54' 00.00"
16-30° 06' 00.00"	27° 16' 00.00"	40-30° 20' 00.00"	27° 06' 00.00"	3-29° 54' 00.00"	27° 51' 00.00"
17-30° 06' 00.00"	27° 13' 00.00"	41-30° 20' 00.00"	27° 11' 00.00"	4-29° 52' 00.00"	27° 51' 00.00"
18-30° 05' 00.00"	27° 13' 00.00"	42-30° 17' 00.00"	27° 11' 00.00"	5-29° 52' 00.00"	27° 47' 00.00"
19-30° 05' 00.00"	27° 09' 00.00"	43-30° 17' 00.00"	27° 09' 00.00"	6-29° 53' 00.00"	27° 47' 00.00"
20-30° 02' 30.00"	27° 09' 00.00"	44-30° 15' 00.00"	27° 09' 00.00"	7-29° 53' 00.00"	27° 45' 00.00"
21-30° 02' 30.00"	27° 11' 00.00"	45-30° 15' 00.00"	27° 08' 00.00"	8-29° 56' 00.00"	27° 45' 00.00"
22-29° 56' 00.00"	27° 11' 00.00"	46-30° 14' 00.00"	27° 08' 00.00"	9-29° 56' 00.00"	27° 46' 00.00"
23-29° 56' 00.00"	27° 15' 00.00"	47-30° 14' 00.00"	27° 20' 00.00"	10-29° 57' 00.00"	27° 46' 00.00"
24-29° 59' 00.00"	27° 15' 00.00"	48-30° 13' 00.00"	27° 20' 00.00"		



S. GHAZALAT BLOCK



SEISMIC SURVEY :

- 3878 Km 2D .
- 205 km² 3D .

NUMBER OF WELLS :

- 2 WELLS .

PREVIOUS CONCESSIONNAIRES :

HBSI & Vegas Companies .

NO.	WELL NAME / NEW NAME	COMPANY	SPUD. DATE COMP. DATE	LAT. LONG.	T.D. FEET	FORMATION REACHED	FINAL STATUS
1	KADAM -1 (Ib 25-1)	CHEVRON	12/07/1977 03/08/1977	30° 11' 13.90" 27° 29' 7.60 "	7,200	Lower Jurassic	P & A
2	RAML NE-1 (La 29-4)	AGIBA	26/09/1977 09/10/1997	30° 03' 35.30" 27° 52' 28.90 "	4,925	Bahariya	P & A



EGPC

S. GHAZALAT BLOCK

STRATIGRAPHIC COLUMN OF THE AREA

AGE		FM. / Mb	LITHOLOGY	SOURCE ROCK
OLIG.- MIOC.		MOGHRA FM.		
LATE EOC.-OLIG.		DABAA FM.		
PAL.-MID EOC.		APOLLONIA FM.		
LATE CRETACEOUS	SENONIAN	KHOMAN FM.		
	TURONIAN	ABU ROASH	A	
			B	
			C	
			D	
			E	
			F	
			G	
	LATE CENOM.			
	EARLY CENOM.	BAHARIYA FM.		
EARLY CRETACEOUS	ALBIAN	KHARITA FM.		
	APTIAN	DAHAB Mbr	ALAMEIN FM.	
		CARBONATE Mbr.		
	BARREMIAN	ALAM EL BUEIB FM.		
	NEOCOMIAN	BETTY FM.		
JURASSIC	MID	MASAJID		
		KHATATBA FM.		
	EARLY	WADI EL NATRUN FM.	BAHREIN FM.	
PALEOZOIC				
PRE-CAMBRIAN		BASEMENT		

Charge and Source Rocks :

- The Jurassic shales of the Khatatba Formation and the interbedded shales throughout Alam El Bueib and Abu Roash are the main source rocks for the block.
- The area is feeding by Abu EL Gharadig basin.

Potential Reservoirs :

- Sandstones of Bahariya Formation.
- Abu Roash E sand as a second target.

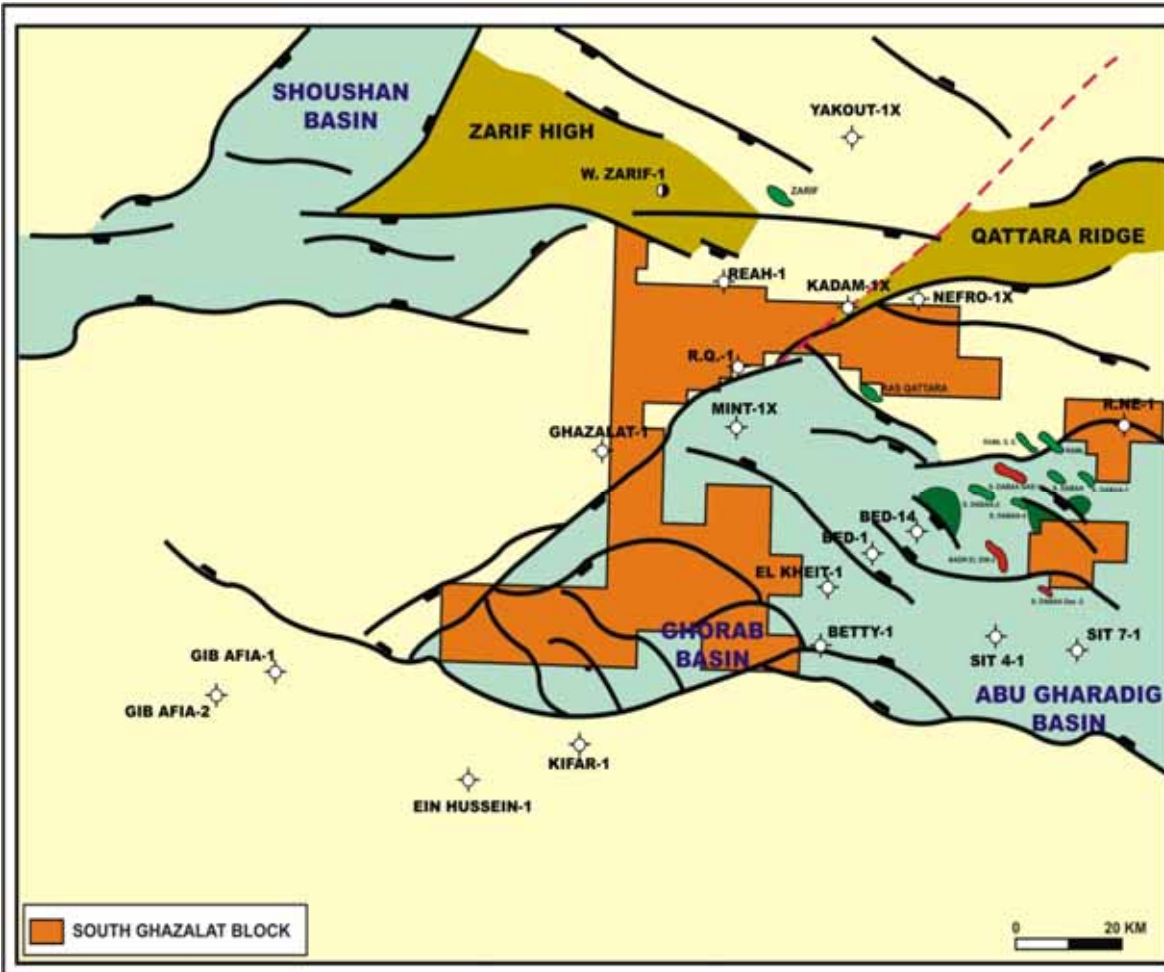
Seals :

- Intra formational shales and limestones of the Bahariya Fm.
- Abu Roash limestone and shale succession which act as vertical and lateral seal for the Bahariya reservoir.



S. GHAZALAT BLOCK

MAIN TECTONIC FEATURES



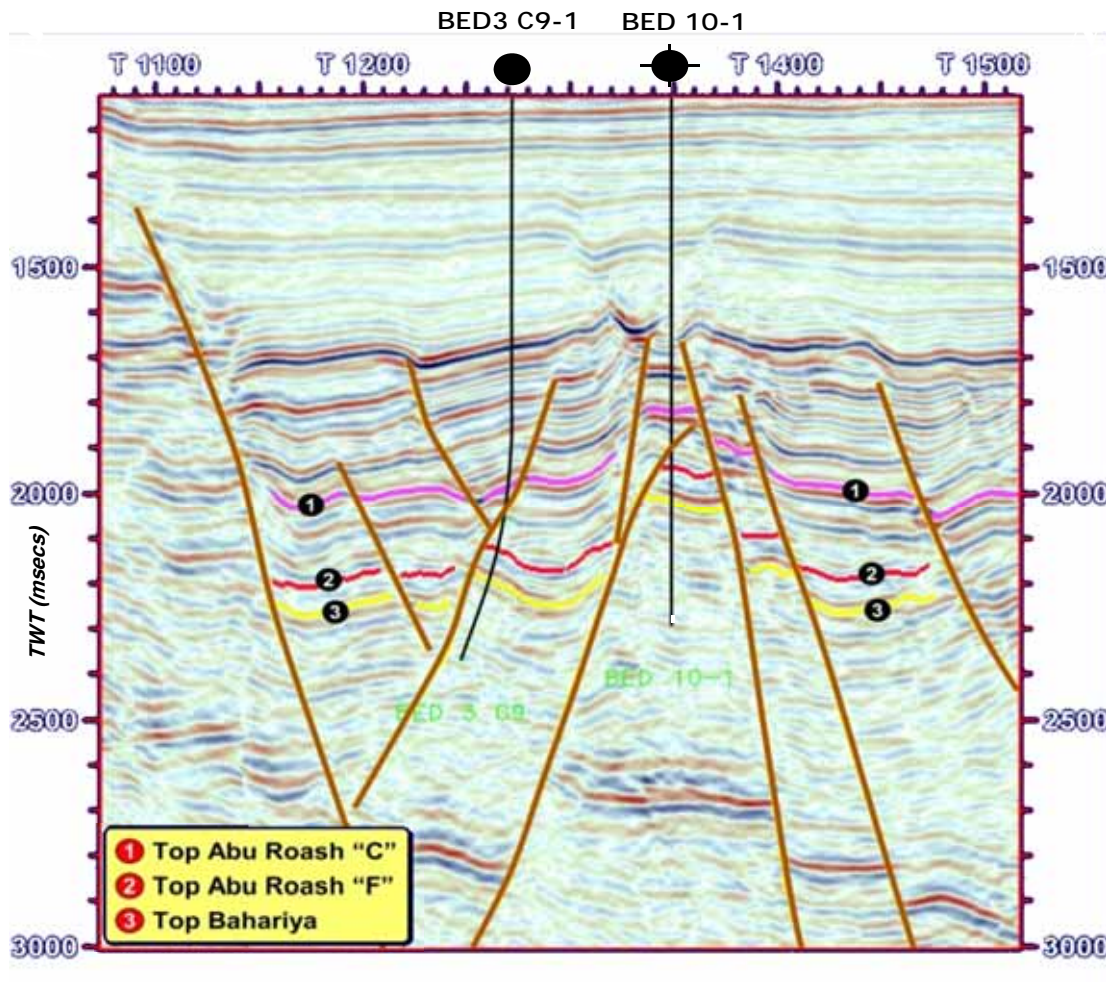
Structural Setting:

- The block is affected mainly by the Abu El Gharadig basin, which trends east-west and is considered one of the most significant tectonic features of the Western Desert. This basin is bounded to the north by the Qattara Ridge.

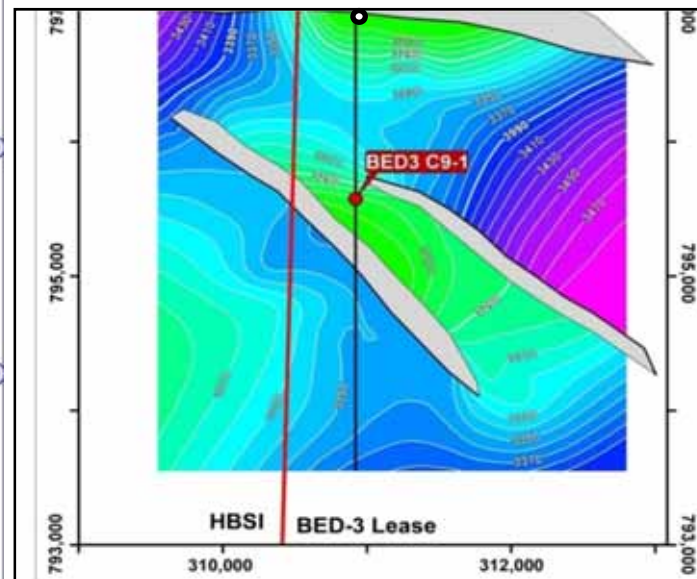


S. GHAZALAT BLOCK

3D Seismic Line Through BED3 C9-1



Top Abu Roash "G" Depth map



The producing zones are Abu Roash "G" and upper Bahariya levels.

Line 174 "closed to block III to the east"