

## **South Abu Sennan Block**

### **Introduction**

*The block is located in the northern part of the Western Desert concerning the southern boundary of the central portion of Abu Al Gharadig Basin, the most prospective and productive province of the basin. That basin, which comprises oil/gas source rocks ranging in age from Jurassic to Late Cretaceous, provides the hydrocarbon kitchen in the area.*

*The area is bounded to the north by Abu Sennan-Abu Gharadig oil/gas fields and Qattara Depression, so; it is in the extension of the Abu Sennan oil field trend.*

*The upper part of the block is an E-W trending fault dependent horst block on the southern extension of Abu Sennan area.*

### **Sources:**

*The area lies up dip from a mature hydrocarbon generating source area in the northern Abu Gharadig basin.*

*Jurassic Khatatba shale and Paleozoic rocks.*

### **Reservoirs:**

*The reservoir rocks are mainly sandstone section in A/R "G", Bahariya, Kharita, Alam El Bueib, Khatatba and Paleozoic formations.*

### **Seals:**

*A high possibility of good vertical and lateral seal for Jurassic reservoir. Resistive limestone and shale levels are present in the bottom of Masajid Formation.*

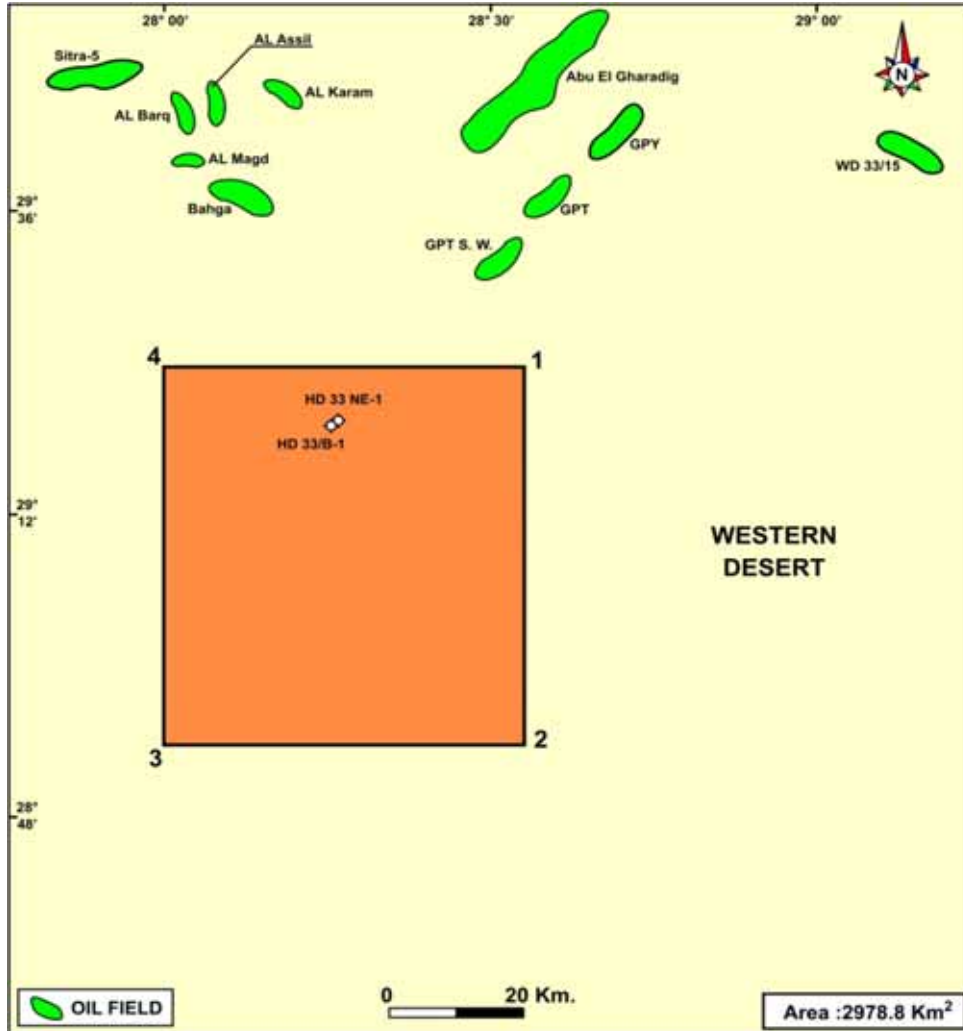
*The shale intervals in Khatatba Formation.*

*Limestones and shales of Abu Roash/G and Alamein Fm.*



EGPC

# SOUTH ABU SENNAN BLOCK



## LOCATION :

The block is located in the northern part of the Western Desert concerning the southern boundary of Abu Al Gharadig Basin. The area is bounded to the north by Abu Sennan-Abu Gharadig oil/gas fields and Qattara Depression .

TOTAL AREA : 2978.8 Km<sup>2</sup> .

## NEARBY FIELDS :

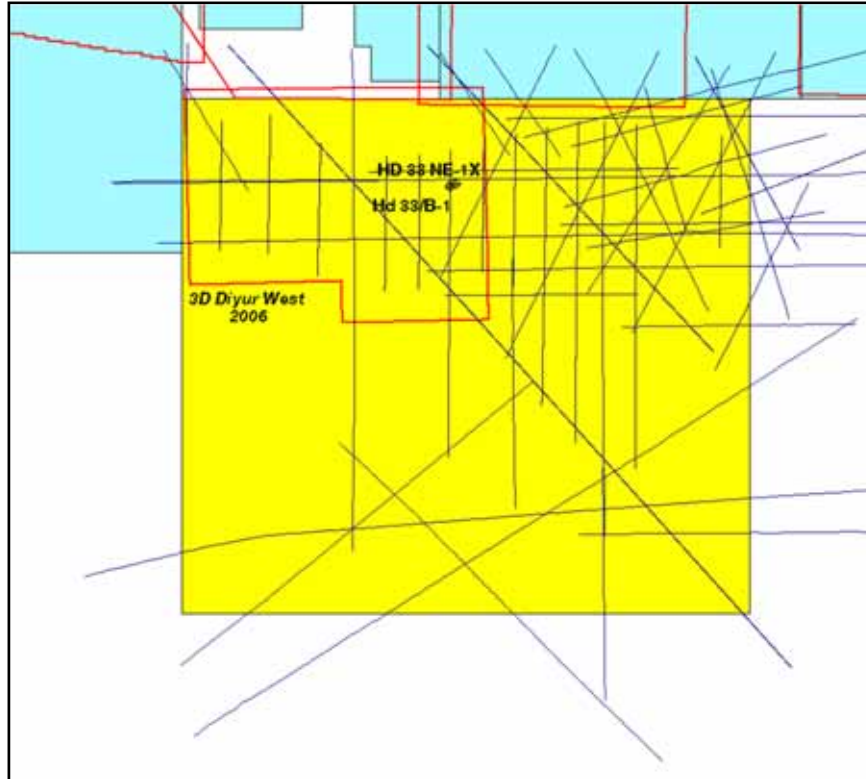
GPT SW, GPT, GPY, Bahga, Al Magd, Al Barq and Al Karam oil fields.

## Coordinates

LAT.	LONG.
1- 29° 24' 00.00"	28° 33' 00.00"
2- 28° 54' 00.00"	28° 33' 00.00"
3- 28° 54' 00.00"	28° 00' 00.00"
4- 29° 24' 00.00"	28° 00' 00.00"



# SOUTH ABU SENNAN BLOCK



## SEISMIC SURVEY :

- 1606 Km 2D.
- 619 km<sup>2</sup> 3D.

## NUMBER OF WELLS :

- 2 WELLS.

## PREVIOUS CONCESSIONNAIRES :

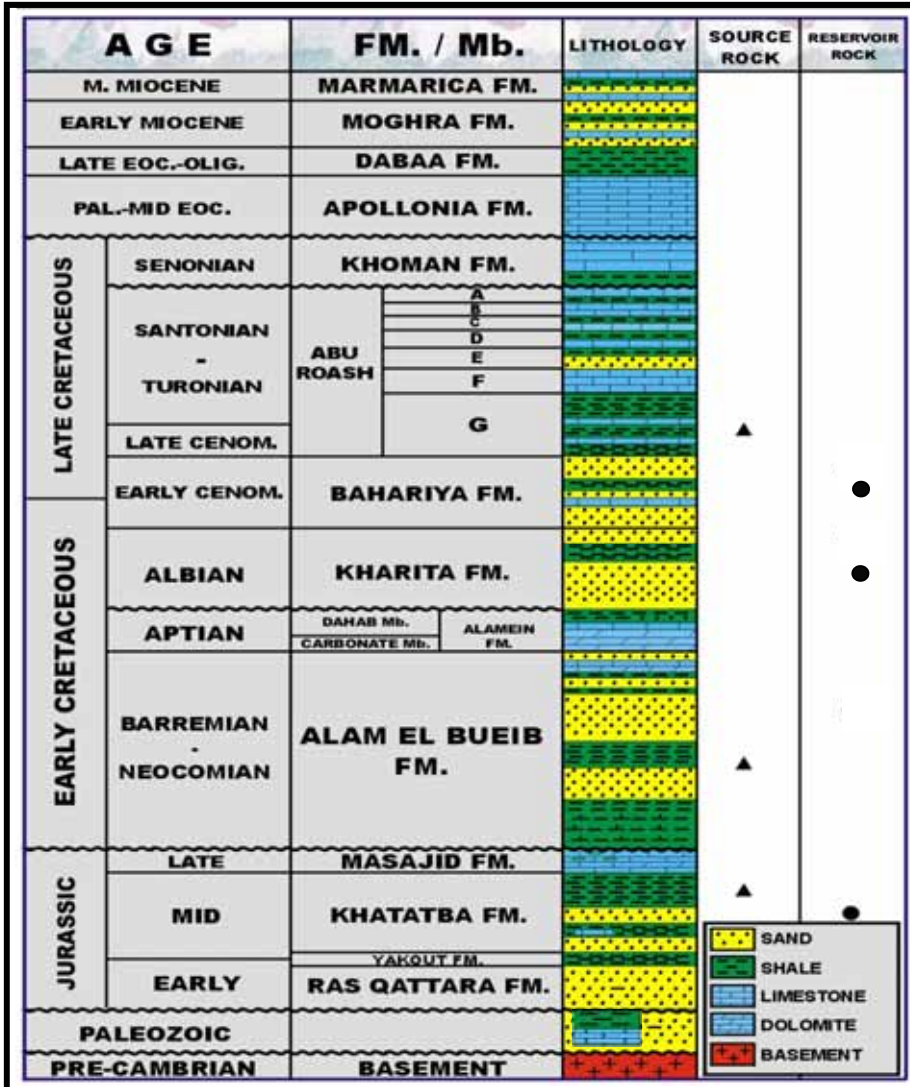
- Apache & TPIC.

NO.	WELL NAME / NEW NAME	COMPANY	SPUD. DATE COMP. DATE	LAT. LONG.	T.D. FEET	FORMATION REACHED	FINAL STATUS
1	HD 33 NE-1	APACHE/ QARUN	27/03/2007 08/04/2007	29° 18' 59.67" 28° 15' 55.29"	5025	"KHARITA"	P & A
2	HD 33 B-1	TPIC	17/04/1995 09/06/1995	29° 18' 50.2" 28° 15' 35.4"	9856	PALEOZOIC	P & A



# SOUTH ABU SENNAN BLOCK

## STRATIGRAPHIC COLUMN OF THE AREA



### SOURCE :

- Turonian Abu Roash "F" & "G" units (oil generation).
- Lower Cretaceous AEB shales (oil and gas generation).
- Jurassic Khatatba Fm "Safa Mb" (gas generation) .

### RESERVOIRS :

- Sandstones of the lower Bahariya Formation .
- Sandstones of Kharita Formation.
- Khatatba and Paleozoic sandstone.

### SEALS :

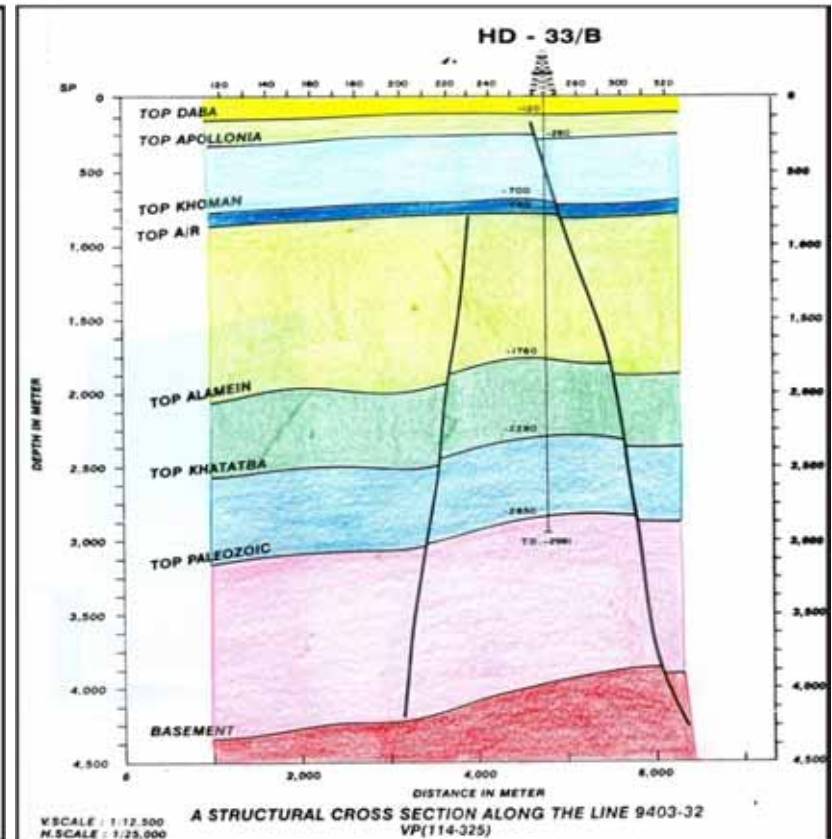
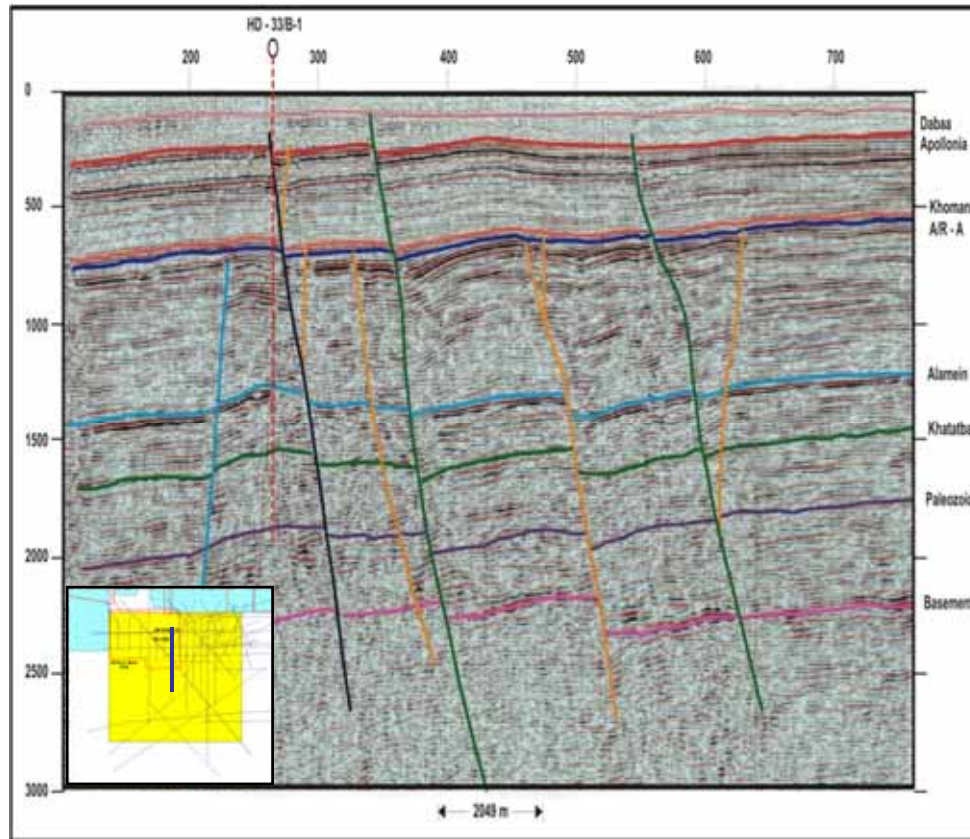
- Limestones and shales of Abu Roash /G and Alamein Fm.
- Thick Jurassic carbonates of Masajid Formation.



EGPC

# SOUTH ABU SENNAN BLOCK

## Seismic Line 9403 - 32

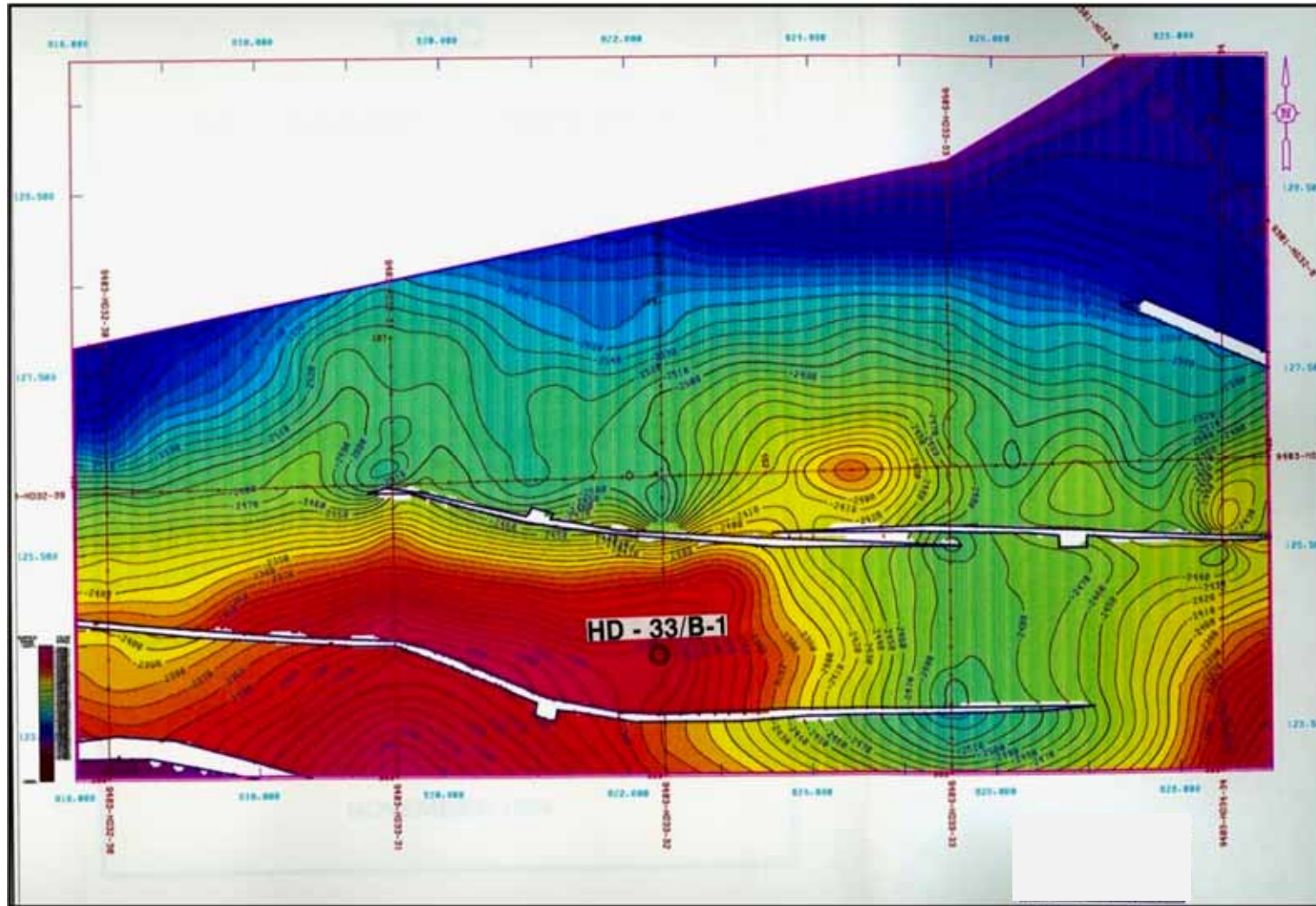




EGPC

# ***SOUTH ABU SENNAN BLOCK***

## **Depth Map of Jurassic Khatatba Formation**





EGPC

# ***SOUTH ABU SENNAN BLOCK***

## **Paleozoic Depth Map**

